

Accessibility Guide
PODIUM 2024

Festival Venues

Welcome to PODIUM 2024, Canada's national bilingual choral Conference and Festival, the top meeting place for Canada's choral and group singing arts sector and community.

Presented by Choral Canada and Alliance chorale du Québec, this multi-day celebration will take place from May 16 to 19, 2024 in Tiohtià:ke/Montreal, on the unceded traditional territory of the Kanien'keha:ka, as well as online through our conference app. PODIUM 2024 will bring together hundreds of delegates and thousands of singers and audience members from across the country and beyond who are passionate about group singing.

This guide allows people with disabilities or reduced mobility to know more about the Festival venues.

If you have any additional questions about the information provided by this guide, please do not hesitate to contact us at podium@choralcanada.org.

Summary

1.	General considerations.....	4
1.1.	Reservation of dedicated spaces in the festival venues.....	4
1.2.	Travel options from the hotel to the festival venues.....	4
1.3.	About the city of Montreal	4
2.	MEM Support Evening.....	5
2.1.	Journey from the hotel to the MEM	5
2.1.1.	On foot	5
2.1.2.	By public transport	5
2.1.3.	By car	5
2.2.	Accessibility of the building and the room.....	6
3.	Concerts at Salle Pierre-Mercure	11
3.1.	Directions from the hotel to the Salle Pierre-Mercure	11
3.1.1.	On foot	11
3.1.2.	By Metro	11
3.1.3.	By car	12
3.2.	Accessibility of the Salle Pierre-Mercure.....	13
3.2.1.	For the audience	14
3.2.2.	For Singers and Performers.....	16
4.	Concerts at Christ Church Cathedral	17
4.1.	Directions from the hotel to Christ Church Cathedral	17
4.1.1.	On foot	17
4.1.2.	By bus	17
4.1.3.	By car	17
4.2.	Accessibility of Christ Church Cathedral	18
4.2.1.	For the audience	18
4.2.2.	For Singers and Performers.....	20
4.2.3.	Toilet	21
5.	Concert at St. Andrew and St. Paul's Church	23
5.1.	Directions from the hotel to St. Andrew's and St. Paul's Church.....	23
5.1.1.	On foot	23

5.1.2.	By bus	23
5.1.3.	By car	23
5.2.	Accessibility of St. Andrew and St. Paul's Church	24
5.2.1.	For the audience	24
5.2.2.	For Singers and Performers.....	28

1. General considerations

1.1. Reservation of dedicated spaces in the festival venues

All concert halls have dedicated seating spaces for mobility aid users, but seating is limited to:

- Four locations for the Salle Pierre-Mercure;
- Four locations for Christ Church Cathedral;
- Three locations for St. Andrew's and St. Paul's Church.

We want to make sure your place fits your needs. Please indicate the type of mobility aid and if you wish to occupy a dedicated space at the time of booking tickets or pass. Contact Marie-Claire Fafard-Blais by email at festivalpodium@chorales.ca or by phone at 514-252-3020 ext. 222. If you reach the voicemail, leave a message with your contact information and you will be called back.

1.2. Travel options from the hotel to the festival venues

This guide offers the ideal options for getting from the hotel to the festival venues.

If none of the options offered work for you, an alternative transportation solution organized by Choral Canada between the Delta Hotel and the venues is possible, but reservations must be made in advance. Contact us by email at podium@choralcanada.org **before May 13th** so that we can arrange transportation.

1.3. About the city of Montreal

Details regarding pedestrian traffic on the streets, and public transport (bus and metro) can be found in the guide to the accessibility of the hotel and the conference venue. Feel free to refer to it.

2. MEM Support Evening

If you are already in Montreal on May 15, an evening in support of Choral Canada will take place at 6:30 p.m. in the Cabaret room at the MEM - Centre des mémoires montréalaises.

Information on the program and how to purchase tickets can be found here:

<https://www.choralcanada.org/fr/soiree-2024>

Location Address:

MEM - Centre des mémoires montréalaises, Salle Cabaret
1210 Saint Laurent Blvd.

The MEM (contraction of two words: Memory + Montrealers) is a museum and citizen space that brings together and promotes the testimonies of various communities to tell the story of the city of Montreal.

2.1. Journey from the hotel to the MEM

2.1.1. On foot

From the hotel, the easiest and quickest way, if you can, is to make the journey on foot via Place des Arts.

The following link shows you the route on Google Maps:

<https://maps.app.goo.gl/pryzYuWgNts1Ej2z6>

2.1.2. By public transport

There is no direct bus ride from the hotel to the MEM, and the nearest metro station, Saint-Laurent, is on line 1 but does not have an elevator.

2.1.3. By car

The driving time from the hotel to the MEM is 5 minutes.

The property has an indoor parking area for a fee. The entrance is on Clark Street, accessible from René-Lévesque Boulevard.

The following link allows you to view the route:
<https://maps.app.goo.gl/92uwYtk3z1Lz911H8>

2.2. Accessibility of the building and the room

The main entrance to the building has an automatic door. There are two buttons on the right. The first one (left) opens the doors of the museum. The second one (right) opens those of the parking and administration.



Illustration 1 - MEM Input

At the entrance, a staircase on the left leads to the upper floor. There is also an elevator that sits past a double door with automatic opening. An elevator logo indicates the location.

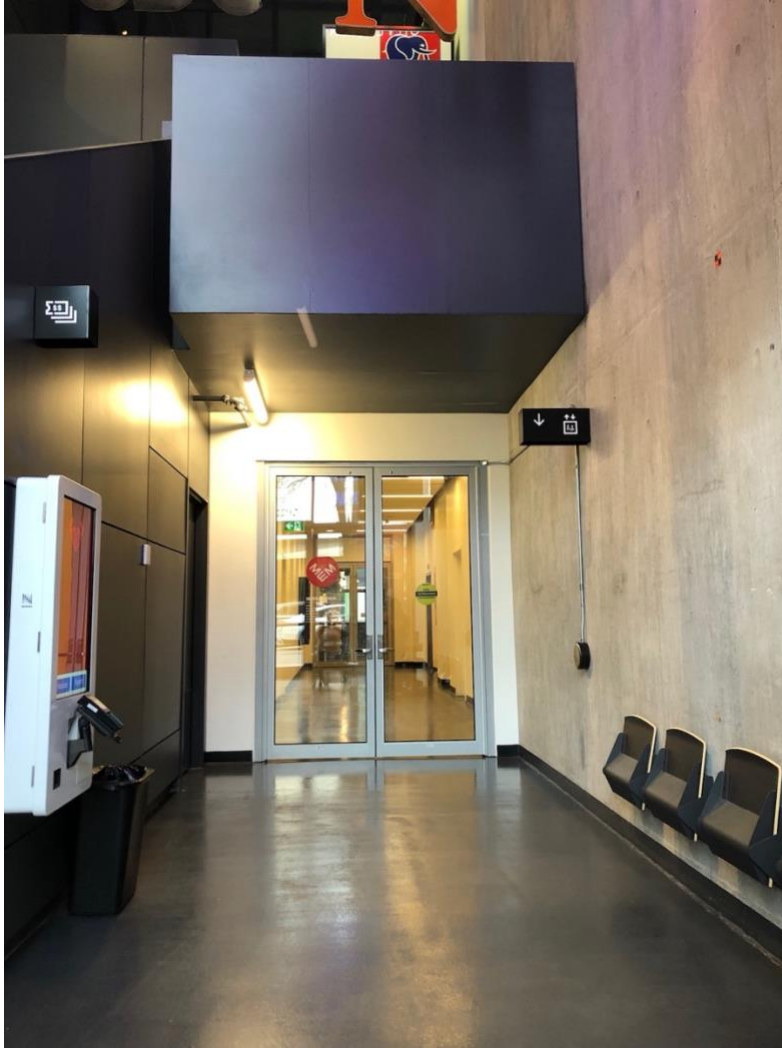


Illustration 2 - Access to elevators leading to the floors

There are two elevators. The call button is located in the middle of the two elevator doors. The RC indication is in raised characters. There is no Braille at the call button.



Illustration 3 - Two elevators leading to the upper floor

Inside the elevator, the buttons are illuminated by press. The floors are indicated in Braille and raised characters. An audio announcement indicates the floor upon arrival. The museum is located on the 1st floor.



Illustration 4 - Buttons inside the elevator

The room in which the evening takes place is called the Cabaret room. It is on the left when you get upstairs. Access doors are not automatic. A person will be able to help you keep the doors open if needed.



Illustration 5 - Entrance to the museum, the Cabaret room is on the left

A cloak rack will be available for the evening.

The tables in the room are accessible.

The stage is not accessible.

There are no toilets in the Cabaret room. The toilets are located in the museum. There are accessible toilets with automatic opening.



Illustration 6 - Accessible washrooms in the museum

The lock on the inside is manual.



Illustration 7 - Lock inside the toilet

3. Concerts at Salle Pierre-Mercure

Venue Address:

Salle Pierre-Mercure, Centre Pierre-Péladeau
300 de Maisonneuve Blvd. East
Montreal, QC H2X 3X6

Concerts Nos. 4, 6 and 7 will be held in this hall.

The list of concerts is available on this page:

<https://www.podium2024.ca/en/concerts>

3.1. Directions from the hotel to the Salle Pierre-Mercure

3.1.1. On foot

The venue is a 16-minute walk from the hotel. The following link allows you to view the route:

<https://maps.app.goo.gl/8sAunEDSNL39pqAz6>

Be careful, there are constructions around the concert hall.

Two entrances are accessible, one on Sanguinet Street, requiring you to bypass the construction zone and take an elevator to get to the ticket office on the lower floor, and the other through the entrance of the Station Berri-UQAM metro station, which gives direct access to the lower floor of the auditorium.

3.1.2. By Metro

For reference, the hotel is located between two metro stations on line 1 (green): McGill (3-minute walk) and Place des Arts (3-minute walk). Both stations are equipped with an elevator.

The quickest option from the hotel is to take metro line 2 from McGill station to Berri-UQAM station. The Berri-UQAM exit gives direct access to the lower floor of the auditorium.

The following link allows you to view the route on Google Maps:

<https://maps.app.goo.gl/KnUoPEt2QESPg4sKA>

3.1.3. By car

The driving time from the hotel to the Salle Pierre-Mercure is 6 minutes. There is work around the room that may make the journey slightly longer.

The following link allows you to view the route on Google Maps:

<https://maps.app.goo.gl/imTUuA9r1W7cLHVv6>

There is an underground car park underneath the auditorium. There are four disabled spaces at the entrance to the car park.

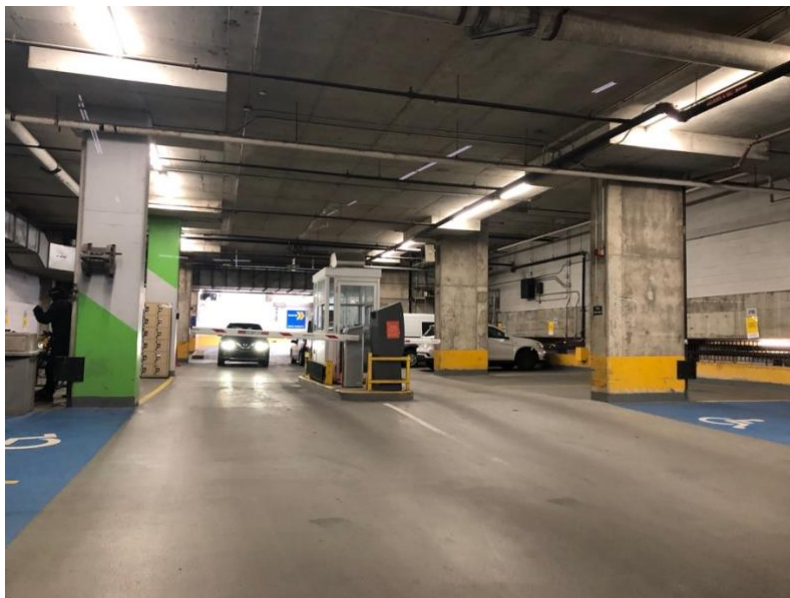


Illustration 8 - Entrance to the car park, view of the four dedicated spaces

An elevator then takes you to the ticket office. The double doors that allow you to access from the car park to the room do not have an automatic opening. The doors are not heavy but they need to be manually open.

If none of the above options work for you, an alternative transportation solution organized by Choral Canada between the Delta Hotel and the performance venues is possible but reservations must be made in advance. Contact us by email at podium@choralcanada.org **before May 13th** so that we can arrange transportation.

3.2. Accessibility of the Salle Pierre-Mercure

Entry can be made through two places. The street is under construction but the door on the street side is accessible, an automatic door opening button is available.



Illustration 9 - Opening on the street side

An elevator will take you to floor 1, where the box office is located.



Illustration 10 - Elevator on the street side

The second access is directly by metro, taking the Centre Pierre-Péladeau, Musique exit, which leads directly to the box office.



Illustration 11 - Music Access

3.2.1. For the audience

The space reserved for people with reduced mobility is located on the 3rd floor, accessible via a lift. There is a maximum of four dedicated spots with a companion. However, as there are a limited number of places, they must be booked in advance. We want to make sure your place fits your needs. Please indicate the type of mobility aid and if you wish to occupy a dedicated space at the time of booking tickets or pass. Contact Marie-Claire Fafard-Blais by email at festivalpodium@chorales.ca or by phone at 514-252-3020 ext. 222. If you reach the voicemail, leave a message with your contact information and you will be called back.

The access door to the dedicated spaces does not have an automatic door opening button. The passage to access the venue can be problematic for scooter users. There is sufficient access for other mobility aids.



Illustration 12 - Fireplace access door



Illustration 13 - Open door, with a view of the access to the room

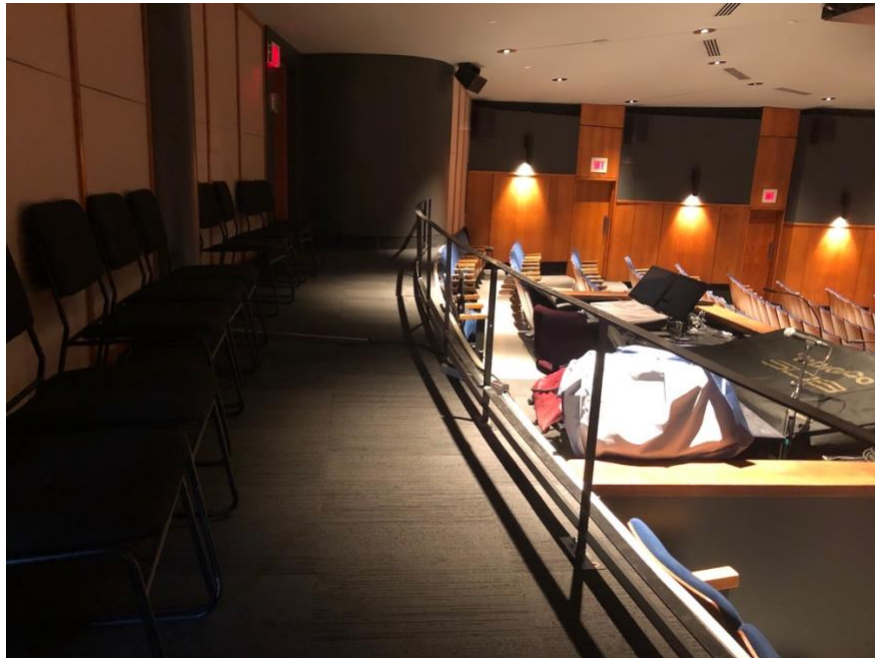


Illustration 14 - Dedicated space for people with disabilities

Accessible washrooms are located at the box office level. The men's and women's toilets are equipped with automatic doors and each has an accessible toilet.



Illustration 15 - Access to toilets



Illustration 16 - Accessible washrooms

There is no toilet on the 3rd floor. You have to take the elevator and go down to the box office floor (1st floor).

3.2.2. For Singers and Performers

While the rehearsal spaces and dressing rooms are accessible, the stage is not accessible to mobility aid users. If the person is able to walk, access is either through the hall via steps on either side of the stage or via stairs from the lower floor (backstage) where the green rooms are located.

If any of your choristers have a disability, please let Choral Canada know so that we can explore access options with the theatre.

4. Concerts at Christ Church Cathedral

Venue Address:

Christ Church Cathedral
635 Sainte-Catherine Street West
Montreal, QC H3A 2B8

Concerts Nos. 1, 3 and 5 will be held in this hall.

The list of concerts is available on this page:

<https://www.podium2024.ca/en/concerts>

4.1. Directions from the hotel to Christ Church Cathedral

4.1.1. On foot

If you can, the easiest and quickest way is to make the journey on foot. The journey is 6 minutes from the hotel to the cathedral. The following link allows you to view the route on Google Maps.

<https://maps.app.goo.gl/QpamFAenNYV2puiM7>

4.1.2. By bus

The most direct route by public transportation is via the 35 Griffintown bus heading OUEST (WEST). When you leave the hotel, take City Councillors Street. The bus stop is located at the intersection with Boulevard de Maisonneuve West: Arrêt De Maisonneuve / City-Councillors (52474). Get off at the next stop, Union / Sainte-Catherine stop (52527).

The following link allows you to view the route on Google Maps:

<https://maps.app.goo.gl/hSiwZ7Jo5YZREVgK8>

4.1.3. By car

The driving time from the hotel to the Cathedral is 2 minutes.
On-street parking is limited and is therefore limited.

The following link allows you to view the route on Google Maps:
<https://maps.app.goo.gl/2DFzcedp3Wg3rnq99>

If none of the above options work for you, an alternative transportation solution organized by Choral Canada between the Delta Hotel and the performance venues is possible but reservations must be made in advance. Contact us by email at podium@choralcanada.org **before May 13th** so that we can arrange transportation.

4.2. Accessibility of Christ Church Cathedral

4.2.1. For the audience



Illustration 17 - View of the cathedral from the bottom of the steps

A staircase leads from the street to the main entrance. The accessible entrance is on the left of the church (Boulevard Robert Bourassa). A climb with flat cobblestones leads up to the entrance esplanade.



Illustration 18 - Access from the street



Illustration 19 - Ascent to the esplanade

The front door can be accessed after two steps. A ramp on the right hand side provides access to the door.



Illustration 20 - Access ramp to the church

At the time of writing, the church's right-hand entrance on Union Avenue, which normally provides pedestrian access to the plaza for mobility aid users, was under construction. Access may be restored at the time of the festival.

For audience members, there is a dedicated area for mobility aid users is available in the main aisle in the front row on the left. The number of spots is limited, there are four. We want to make sure your place fits your needs. Please indicate the type of mobility aid and if you wish to occupy a dedicated space at the time of booking tickets or pass. Contact Marie-Claire Fafard-Blais by email at festivalpodium@chorales.ca or by phone at 514-252-3020 ext. 222. If you reach the voicemail, leave a message with your contact information and you will be called back.

Note that a small ramp with a thickness of 2 cm, so not completely on the same level, provides access to this space.



Illustration 21 - Dedicated space for mobility aids

4.2.2. For Singers and Performers

For singers, if you use a wheelchair, you will not be able to access the artists' foyer but you can access the concert spaces. If you need to climb the upper part of the transept, a wooden ramp can be placed on the right side. You must contact Choral Canada so that we can coordinate with the Cathedral.



Illustration 22 - Removable wooden railing on the right side of the transept

4.2.3. Toilet

There are several toilets. For the singers, there is a non-accessible toilet behind the red door to the right of the transept after two steps. There are two near the main entrance of the church, on either side of the door. There is no logo indicating that the washrooms are accessible. The doors are not automatic and are quite heavy, so don't hesitate to ask for help opening them. There is enough space inside for a wheelchair to fit in but not necessarily for a U-turn, depending on the size of the wheelchair. Walker users have enough space. There are transfer bars but they are a bit away from the toilet. The sink and hand dryer are a bit high for seated use.



Illustration 23 - Accessible washrooms

5. Concert at St. Andrew and St. Paul's Church

Venue Address:

St. Andrew's and St. Paul's Church
3415 Redpath Street
Montreal, QC H3G 2G2

Concert No. 2 will be given in this hall.

The list of concerts is available on this page:

<https://www.podium2024.ca/en/concerts>

5.1. Directions from the hotel to St. Andrew's and St. Paul's Church

5.1.1. On foot

It's an 18-minute trip from the hotel to the church, along Sherbrooke Street West. The accessible entrance is located at the car entrance, a sloping walkway at the corner of Redpath Street and Sherbrooke Street West.

The following link allows you to view the route on Google Maps.

<https://maps.app.goo.gl/KHpMY2KMVJ96aapK6>

5.1.2. By bus

The most direct route by public transport is via the 24 Sherbrooke bus heading WEST. Leaving the hotel, take City Councillors Street and turn right onto Sherbrooke Street West. The bus stop is located at the intersection with Hutchison Street: Sherbrooke / Hutchison stop (52430). Get off at the Sherbrooke/Redpath stop (52166).

The following link allows you to view the route on Google Maps.

<https://maps.app.goo.gl/XVoXCKZH7rDWuh8a6>

5.1.3. By car

The driving time from the hotel to the church is 4 minutes.

On-street parking is limited and is therefore limited.

The following link allows you to view the route on Google Maps.

<https://maps.app.goo.gl/5JFTLa8GZfhcvh78>

If none of the above options work for you, an alternative transportation solution organized by Choral Canada between the Delta Hotel and the performance venues is possible but reservations must be made in advance. Contact us by email at podium@choralcanada.org **before May 13th** so that we can arrange transportation.

5.2. Accessibility of St. Andrew and St. Paul's Church

5.2.1. For the audience

Main Entrance

The main entrance is at the top of a staircase and is not accessible. The accessible entrance is on the left side of the church after a sloping passage.



Illustration 24 - Steps in front of the church

Entry is through a double door, one side of which must be unlocked by someone.



Illustration 25 - Climb from the street



Illustration 26 - Side access door

You arrive in a room where the toilets are also located.

Toilet

Two toilets are available. One of the toilets is accessible. There is no automatic door. The lock is manual.



Illustration 27 - Two toilet doors. The toilet on the right is accessible.



Illustration 28 - Accessible washrooms

Dedicated spots

Go to the entrance of the church to access the nave. Dedicated spots are limited, there are three of them. They are located at the back of the church, on both sides. You can access it through the doors leading to the side aisles.

We want to make sure your place fits your needs. Please indicate the type of mobility aid and if you wish to occupy a dedicated space at the time of booking tickets or pass. Contact Marie-Claire Fafard-Blais by email at festivalpodium@chorales.ca or by phone at 514-252-3020 ext. 222. If you reach the voicemail, leave a message with your contact information and you will be called back.

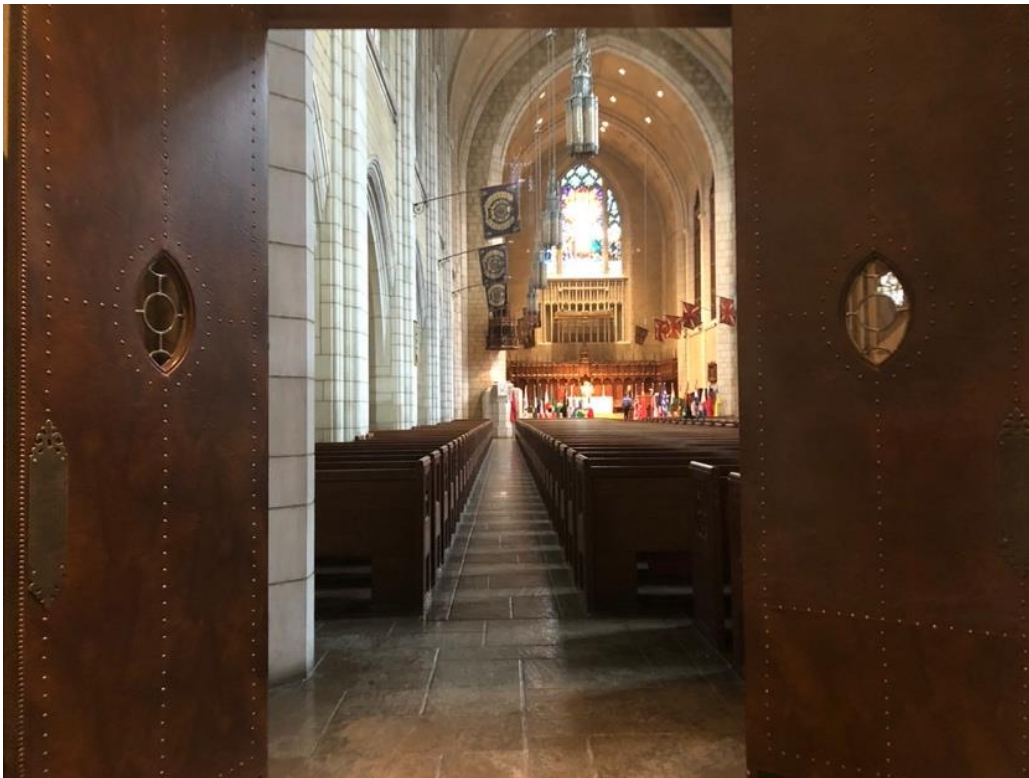


Illustration 29 - Side door access left

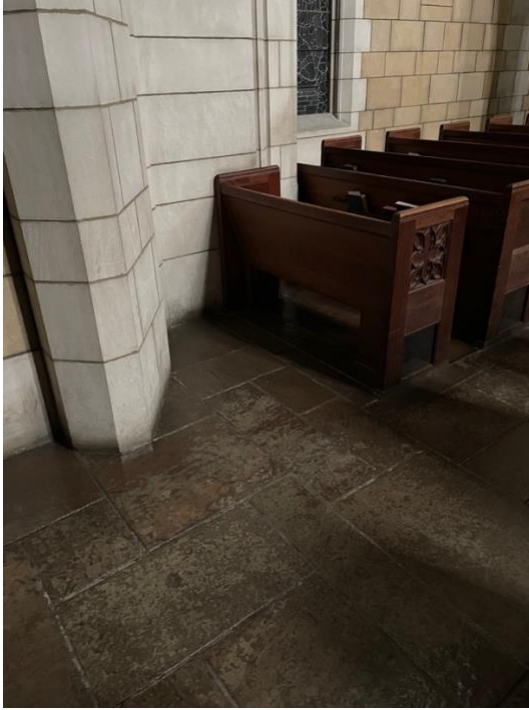


Illustration 30 - Dedicated left side slot



Illustration 31 - Dedicated right-side slot

5.2.2. For Singers and Performers

While the rehearsal spaces and foyers are accessible, the stage space is not accessible to mobility aid users. If the person is able to walk, access is either through the room via steps or by stairs from the upper floor where the fireplaces are located.

If any of your choristers have a disability, please let Choral Canada know so that we can explore access options with the church.

If you have any additional questions about the information in this guide, please do not hesitate to contact us at podium@choralcanada.org.

Guide by Diane Kolin, ArtsAby, <https://www.artsably.com/>.